

浙江尚驰电气有限公司

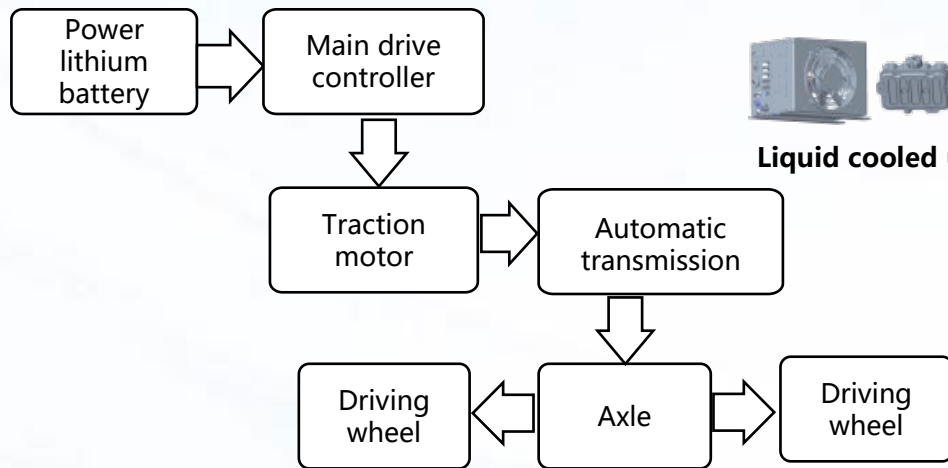
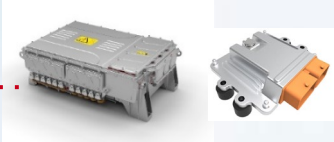
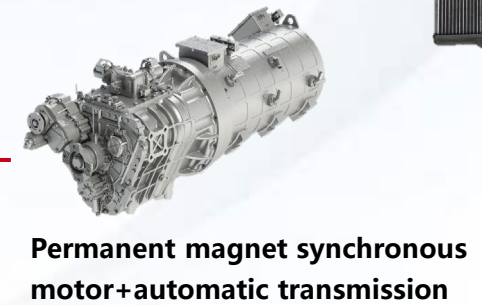
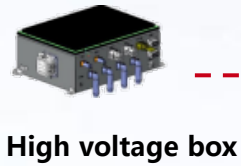
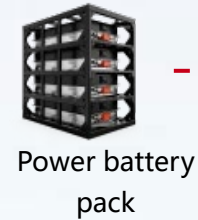
ZHEJIANG SHANGCHI ELECTRIC CO., LTD



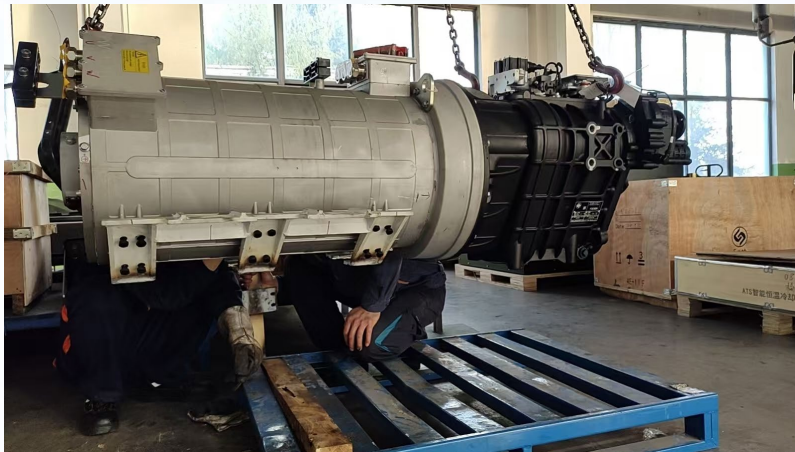
油改电系列

Series of Oil-to-Electricity Conversion

Oil to electricity conversion plan for mining trucks



JESARCI **Case sharing**



Scheme for pure electric transformation of loader



Integrated display and control machine



Liquid cooled unit



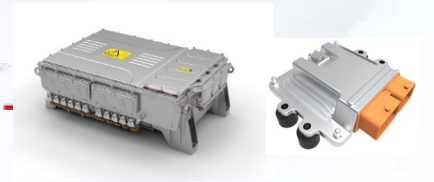
Permanent magnet synchronous motor



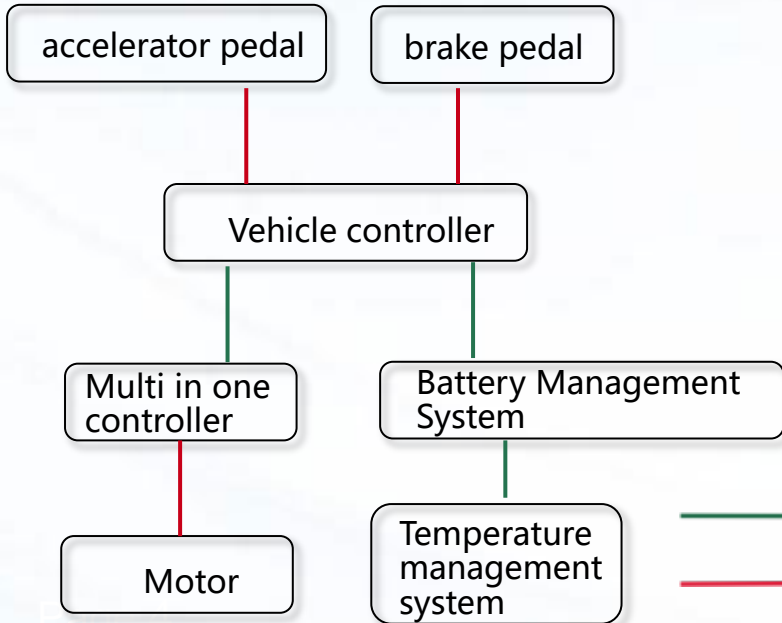
Electronic accelerator pedal



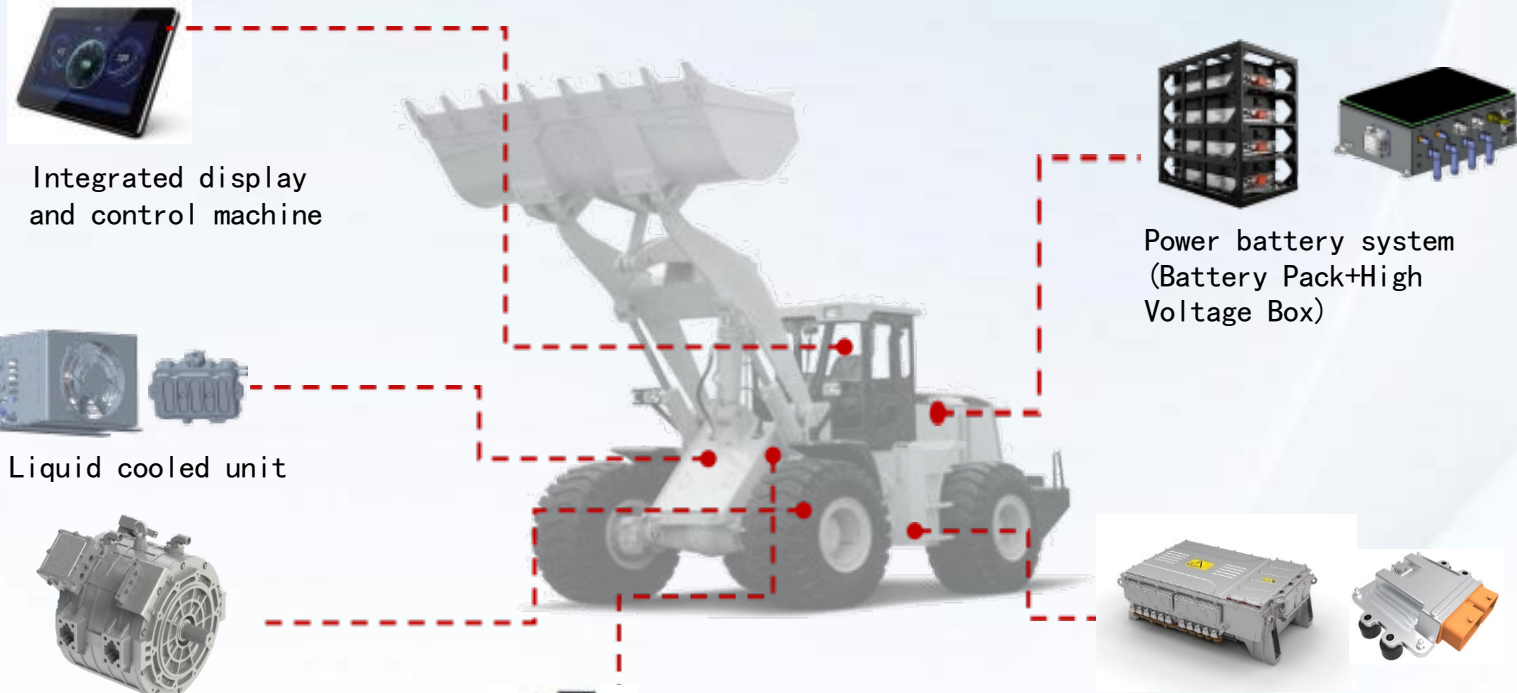
Power battery system (Battery Pack+High Voltage Box)



Multi in one controller+vehicle controller



— CAN signal communication
 — Hard wire control



Loader towing power transformation plan



Electric suspended cable transmission system



Heavy hammer cable drum transmission system



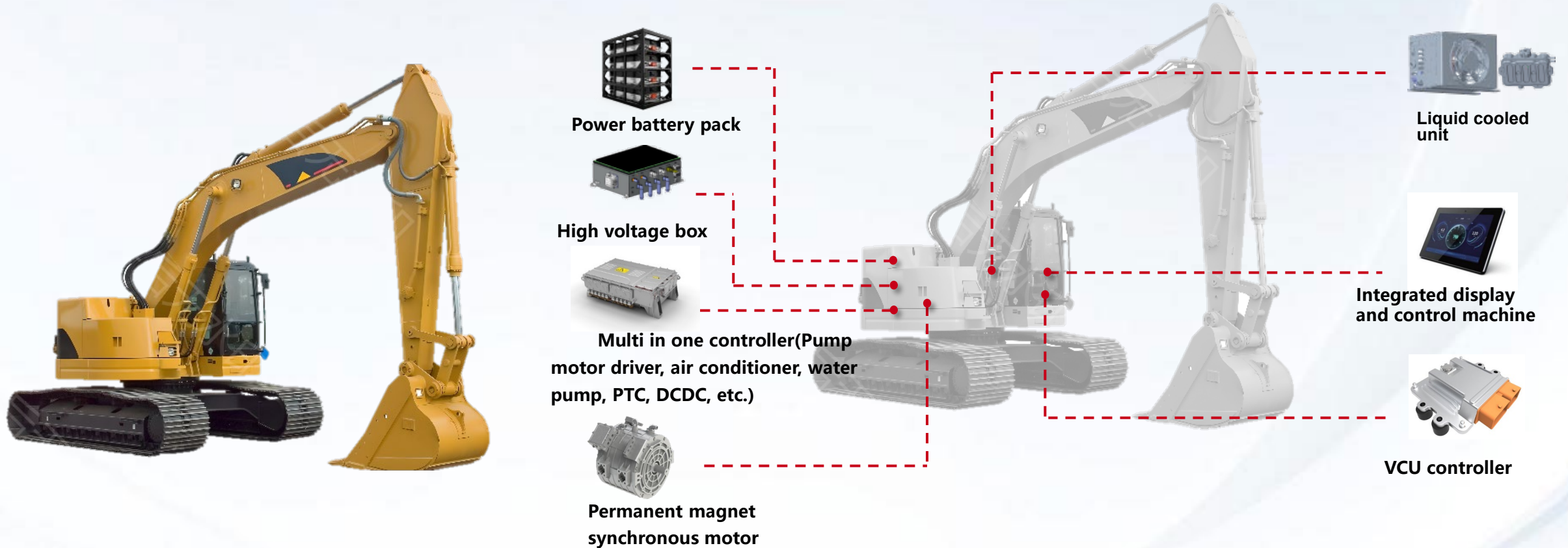
Vehicle mounted electric cable drum transmission system



Car mounted electric cable reel+follow-up electric sports car



Excavator renovation plan







浙江尚驰电气有限公司

ZHEJIANG SHANGCHI ELECTRIC CO., LTD



Address: Building 2, No. 6, Xinzhong Road, Haichang Street, Haining City, Jiaxing City, Zhejiang Province 314400

Tel.: +86-17352708588 WhatsApp: +86-18322726250

E-mail: 100030@crccshangchi.com

100004@crccshangchi.com

Web: www.shangchi-group.cn

